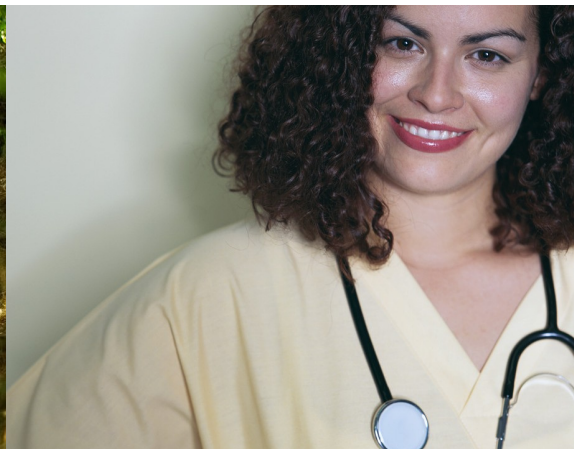


Working With EASE

EASE, your employee assistance program, is a free and confidential counseling service which provides:

- 24 hour a day access to licensed counselors at: 800.654.9778.
- Free individual, couples or family counseling for employees and their dependents.
- Information and resources on our Web site: www.easeap.com.



Caution In Health Care Jobs

Health care settings are special places, but they are also at high risk for violence. Emergency rooms, drug addiction treatment units, and other health care settings where emotions run high are almost equal in risk to the environment that police officers face (in terms of violence and the potential for assault). If you work in a health care setting, take advantage of recommendations from your employer for personal protection such as classes that emphasize self-protection and defense techniques. Also remember that when violence happens, it is often sudden and without warning. It is not accompanied by the drama or sound and visual effects you see on TV. After a violent incident, participate in a coordinated “debriefing” with your colleagues to reduce any aftereffects, even if you don’t feel like it. Even if you feel okay moments after a violent incident occurs, you could experience posttraumatic effects later.

Financial Stress & Health Effects

Debt overload can damage your health. It produces high levels of stress, and this type of stress can easily become chronic. Worry, fear, anger, shame, and despair are among the many undesirable feelings that debt overload prompts. Avoiding this stress is no less important than other preventive health measures such as getting enough exercise, avoiding a high-fat diet, and seeing a doctor regularly. There are hundreds of studies that back up this claim. Teach your children the financial and emotional consequences of debt overload—especially if they weren’t taught to you. Debt overload isn’t just a bad thing—it’s a chronic health problem. EASE can help!

Angry at Work? EAP Can Help

Are you angry with your supervisor or coworker, but not sure what to do about it? Consider a confidential appointment with EASE as a starting point to get the situation resolved. Don’t remain in a chronically angry state that can harm your health. Cynicism, resentment, and more conflict may be the result. Trust the EAP’s ability to help you find the answers to the toughest questions and issues you face so you can be your best at work—and perhaps even reach a new level of job satisfaction.

Workplace Bullying: It's Your Business

Workplace bullying is repeated mistreatment of an employee by using verbal abuse, threatening, humiliating, or offensive behavior/actions, and/or by interfering with work. Both men and women are targets of bullying in the workplace, but both male and female bullies more often target women. Coworkers can play a powerful role in discouraging bullying. Be a good listener and encourage a victimized coworker to seek support from an appropriate helpful resource, such as the human resources department or the employee assistance office. Moreover, refuse to betray a coworker when a bully attempts to enlist you as a participant. Speak up when appropriate to point out what appears to be inappropriate or unprofessional behavior.

Burnout Prevention Starts with You

Take time to participate in opportunities to manage your stress when they present themselves during your workday. Seeking work-life balance isn't only about what you do outside of work. It can also be what you do *at work*. Take the time to attend employer-sponsored or employee-initiated "mini" social events, breaks, group lunches, small outings, and impromptu activities such as on-site birthday celebrations. Don't see these events as inconveniences. These are valuable rejuvenators that allow you to step away from the grindstone. Make them a small part of your burnout prevention strategy.

Relationship Harmony and Heart Health

Conflict in close relationships may contribute to heart disease, according to a study conducted by the International Institute for Society and Health, University College (London). The *Archives of Internal Medicine* released the results of the study, which examined negative aspects of disharmony in close relationships and the potential links to heart disease. These findings add a new motivation to improve harmony in personal relationships. In addition to living a happier life, improving the quality of a close relationship may help you live a longer one as well! EASE can help, give us a call.

The Great American Smokeout®

The Great American Smokeout® (November 18) is sponsored by the American Cancer Society. Its purpose is to encourage people to quit smoking. The challenge: quit smoking cigarettes for 24 hours. The goal: inspiration to quit permanently. If you don't think a break from this habit can make a difference, get this: If you don't smoke after midnight, by noon the next day the amount of carbon monoxide in your blood will be equal to a nonsmoker's. Within two weeks to three months, your heart attack risk will start to drop. Within a month to nine months, you will breathe easier. And it keeps getting better after that! Learn more at www.cancer.org. EASE or your health care provider can also offer resources to help you win the fight against tobacco.

The logo for EASE, featuring the word "ease" in a light blue, lowercase, sans-serif font with a slight shadow effect.